

## **QUALITY OF LITERATURE ASSESSMENT (QOLA)**

Based on the Effective Public Health Practice Project “Quality Assessment Tool for Quantitative Studies” (1998)<sup>1</sup> & Downs and Black (1998)<sup>2</sup>

### **Objectives and Method Reporting**

Q1: Is the hypothesis/aim/objective of the study clearly described? <sup>2(p382)</sup>

- 1- Fully described
- 2- Partially described
- 3- Not described

Q2: Does the article clearly state how the main outcomes are to be measured?

- 1- Fully described
- 2- Partially described
- 3- Not described

Q3: Is relevant and adequate background information provided?

- 1- Fully described
- 2- Partially described
- 3- Not described

### **Study Design**

Q4: Does the study provide adequate controls for confounding variables or mediators that would prevent the hypothesis or objective from being tested?

- 1- Fully provided
- 2- Partially provided
- 3- Not provided

Q5: Indicate the study design.

- 1- Randomized controlled trial (RCT)
- 2- Quasi-experimental (e.g. Controlled clinical trial)
- 3- Observational study that has 2 or more groups and is non-randomized (e.g. cohort and case-control designs)
- 4- Observational study has 1 group with pre + post (before and after)
- 5- Observational study has 1 group at a single time point
- 6- Other: \_\_\_\_\_

### **Participant Demographics & Confounders**

Q6: Are the characteristics of the participants included in the study clearly described? (In cohort studies and trials, inclusion and/or exclusion criteria should be given. In case-control studies, a case-definition and the source of controls should be given.)<sup>2(p382)</sup>

- 1- Fully described
- 2- Partially described
- 3- Not described

Q7: How many of the following significant characteristics of the sample were described:  
Race, Sex, Age, SES, Education Level, Psychiatric Status/ Pre-Existing Psychiatric History

Enter the number of characteristics selected here: \_\_\_\_\_

### Data Collection Methods

Q8: Were data collection tools shown to be valid?<sup>1(p1)</sup> **(Either shown/specified in article or references to other articles)**<sup>3(p3)</sup>

- 1- Fully described
- 2- Partially described
- 3- Not described

Q9: Were data collection tools shown to be reliable?<sup>1(p1)</sup> **(Either shown/specified in article or references to other articles)**<sup>3(p3)</sup>

- 1- Fully described
- 2- Partially described
- 3- Not described

### Data Analysis and Results

Q10: Are the statistical methods appropriate for the study design?<sup>1(p3)</sup> (eg. using non-parametrics for small samples or non-normal distributions, meeting assumptions of statistical testing, etc.)

- 1- Yes
- 2- No

Q11: If multiple comparisons made, are adjustments made in statistical testing (e.g. Bonferroni correction)?

- 1- Yes
- 2- No
- 3- Not applicable (multiple comparisons not made)

Q12: Are effect sizes reported for main outcomes?

- 1- Yes
- 2- No

Q13: Are the main findings of the study clearly described?<sup>2(p382)</sup>

- 1- Fully described
- 2- Partially described
- 3- Not Described

### Discussion/Conclusions

Q14: Are conclusions/discussion consistent with and justified by the results? (e.g. conclusions can be generalized from the sample to the population stated, conclusions are supported by results, clinical and statistical significance are not confused)

- 1- Fully justified
- 2- Partially justified
- 3- Not justified

Q15: Are the limitations of the study clearly described?

- 1- Fully described
- 2- Partially described
- 3- Not Described

Q16: Are alternate hypothesis or conclusions presented?

- 1- Fully described
- 2- Partially described
- 3- Not Described

### Conflict of Interest & Independence

Q17: Are there any conflicts of interests stated?

- 1- The author states there are no conflicts of interest
- 2- The author does not state whether or not there are conflicts of interest
- 3- The author states that there are conflicts of interest

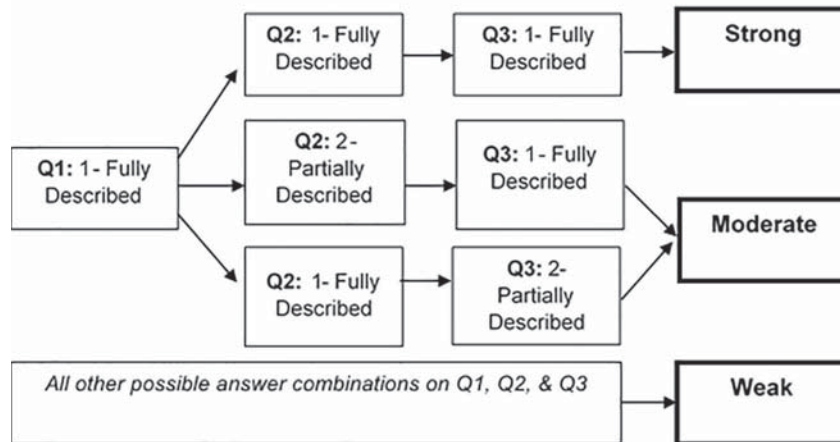
### QUALITY OF LITERATURE ASSESSMENT (QOLA) SCORING CRITERIA

**Instructions:** Use the following guide to rate each of the 7 subsections based on your answers. The global rating is derived from the ratings of each subsection by totaling the number of “Weak” ratings assigned for the subsections.

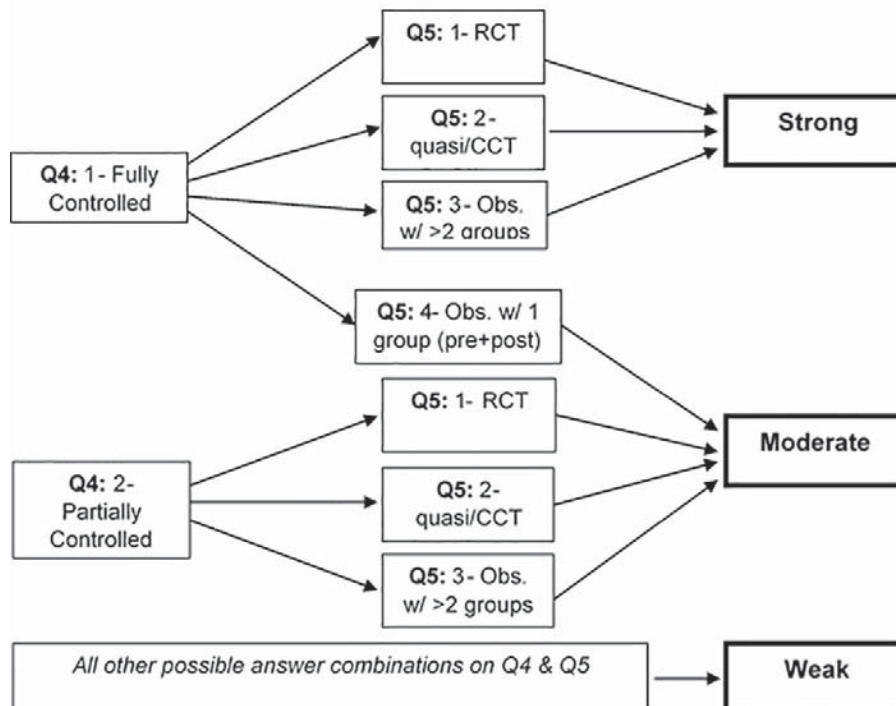
### REFERENCES

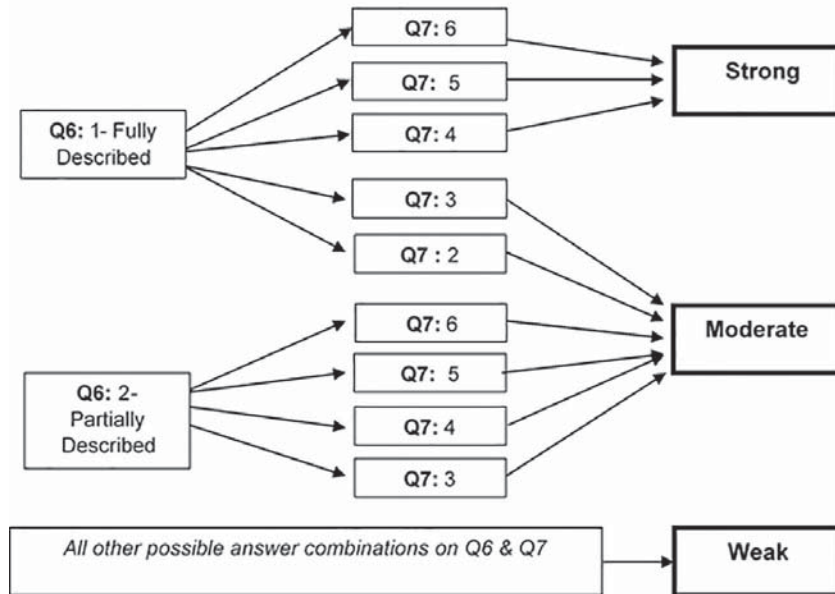
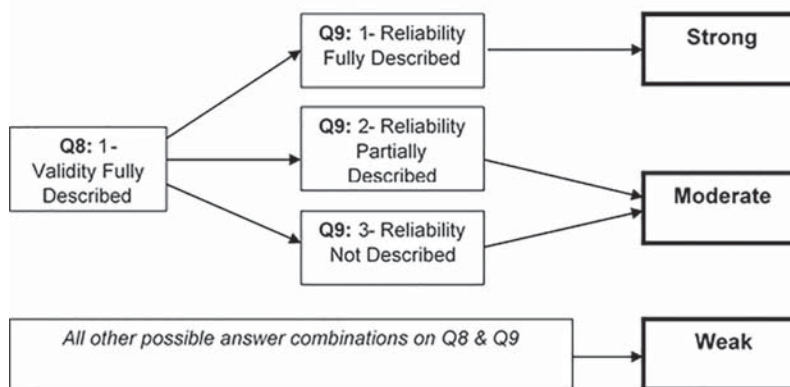
1. Effective Public Health Practice Project. *Quality Assessment Tool For Quantitative Studies*. Hamilton, ON: Effective Public Health Practice Project; 1998. <http://www.ehpmp.ca/index.html>. Accessed July 6, 2015.
2. Downs S, Black N. The Feasibility of Creating a checklist for the assessment of the methodological quality both of randomised and non-randomised studies of health care interventions. *J Epidemiology Commun Health*. 1998;52(6):377-384. doi:10.1136/jech.52.6.377.
3. Effective Public Health Practice Project. *Dictionary for the Effective Public Health Practice Project Quality Assessment Tool For Quantitative Studies*. Hamilton, ON: Effective Public Health Practice Project; 1998. <http://www.ehpmp.ca/index.html>. Accessed July 6, 2015.

### Section 1: Objectives and Method Reporting (Q1, Q2, Q3)

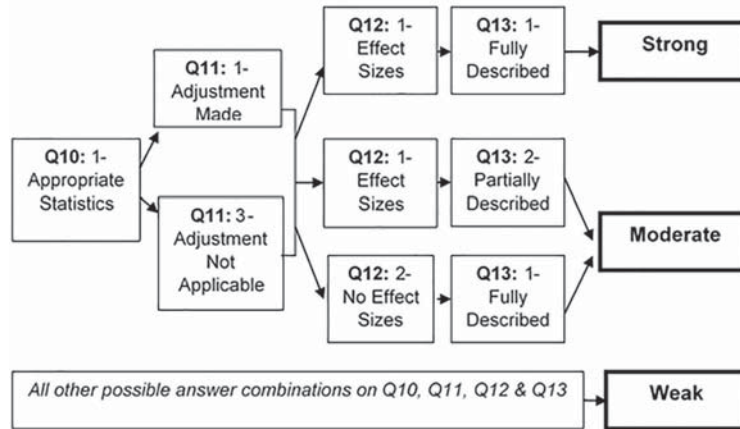


### Section 2: Study Design (Q4 & Q5)

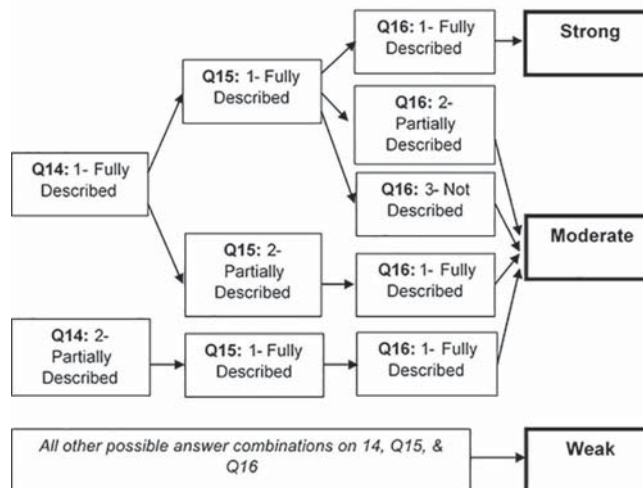


**Section 3: Participant Demographics 7 Confounders (Q6 & Q7)****Section 4: Data Collection Methods (Q8 & Q9)**

### Section 5: Data Analysis & Results (Q10, Q11, Q12 & Q13)



### Section 6: Discussion/Conclusions (Q14, Q15, Q16)



### Section 7: Conflict of Interest & Independence (Q17)

